





ΑΙΚΟΓΡΑΦΙΑ

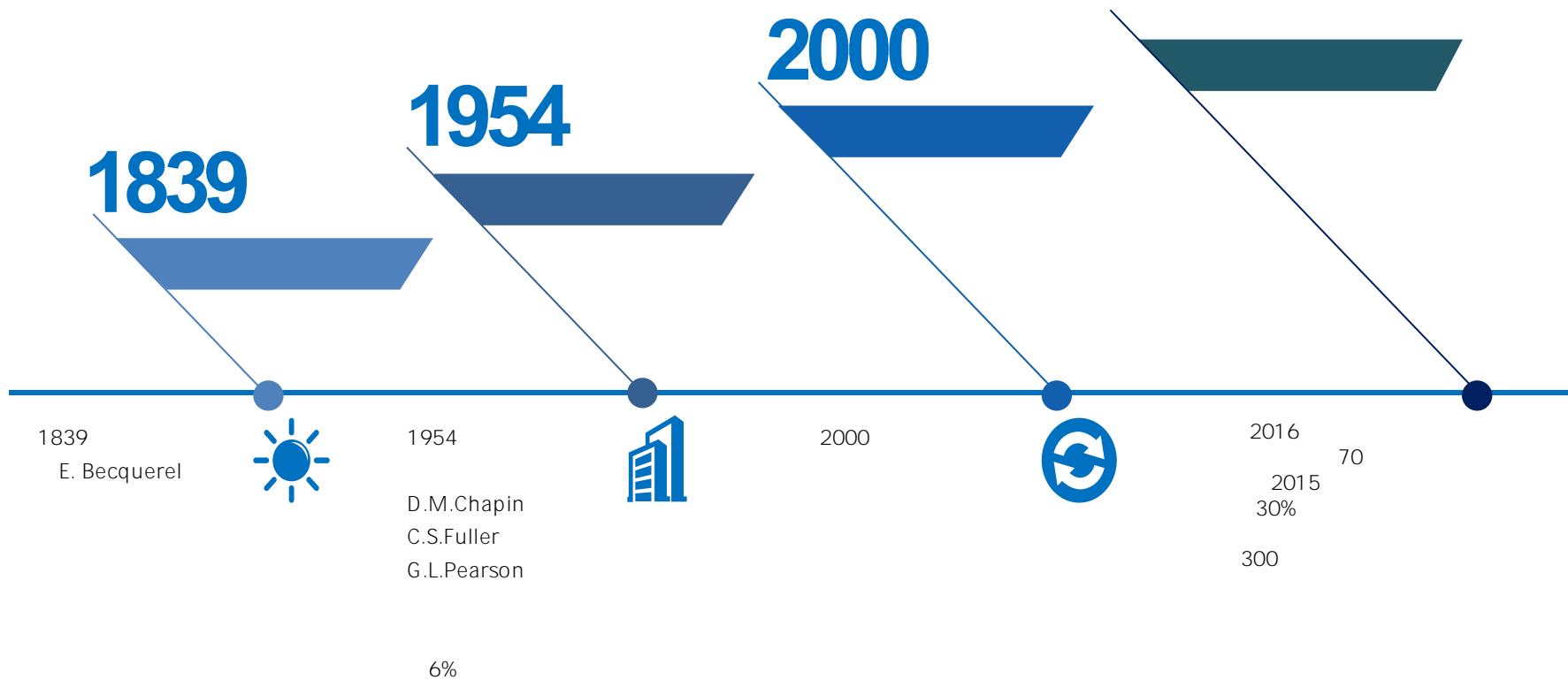
ΑΙΚΟΓΡΑΦΙΑ

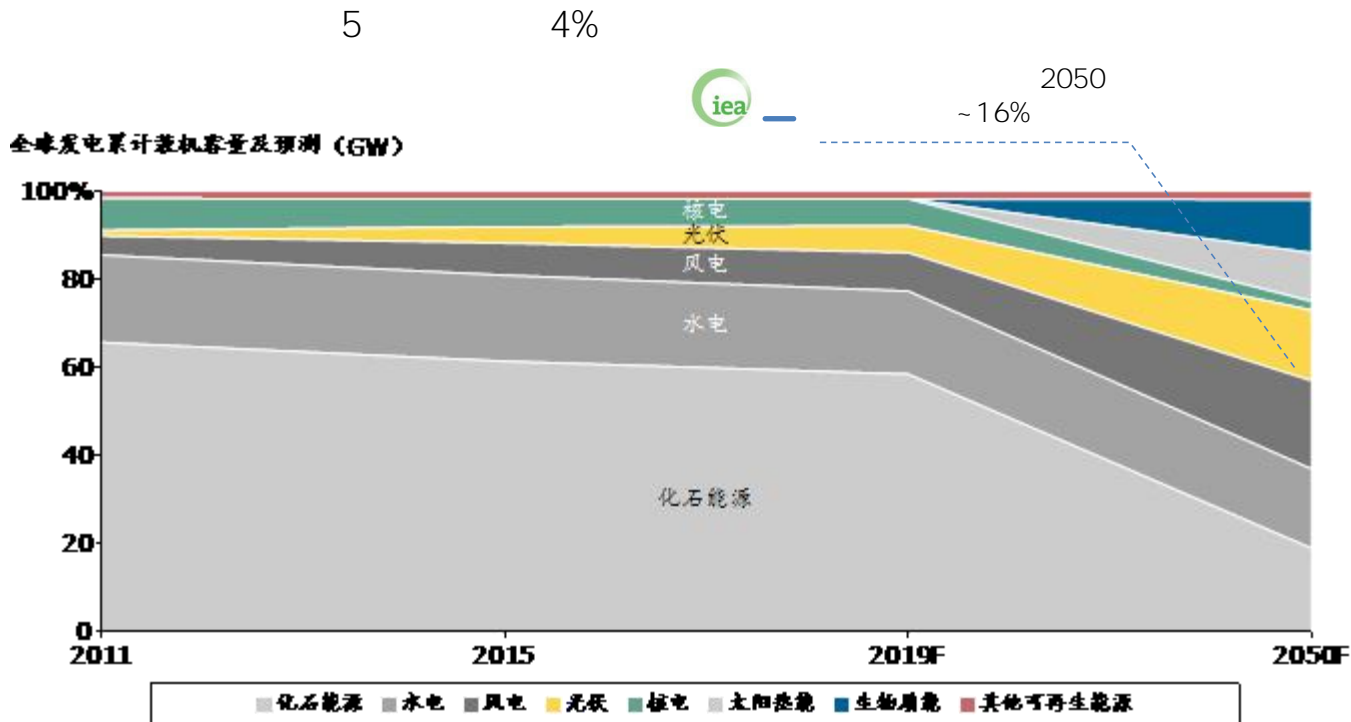
ΑΙΚΟΓΡΑΦΙΑ

ΑΙΚΟΓΡΑΦΙΑ

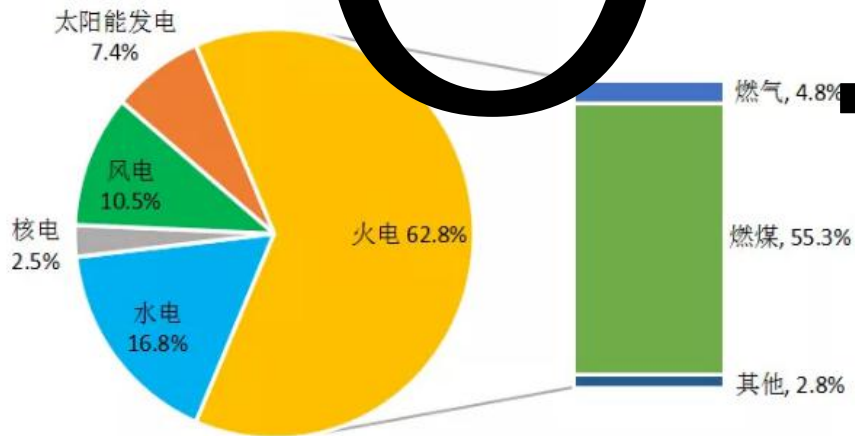




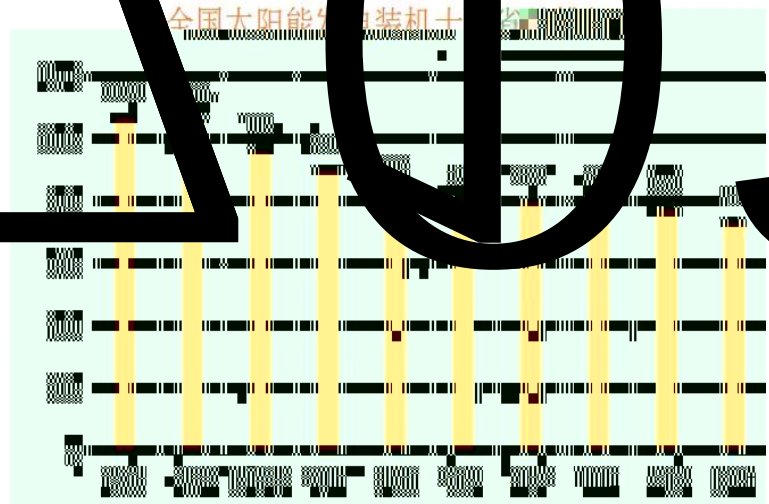




2019年6月全国装机构成图



全国太阳能发电装机容量



2019 6
1070
903n

1061

962

		16	*		
		• N/A	• N/A	•	• _____
		• ~70GW	• ~75%	• /	• _____
		• 49GW • 69GW	• ~54%	• /	• _____ 0 5 w PERC • _____ 21.2 19.5
		• 52GW • 72GW	• ~73%	•	• _____ w • MBB
		• 34GW • 73GW	•	•	• _____ • _____ 50KW MW

全球光伏趋势



—



—

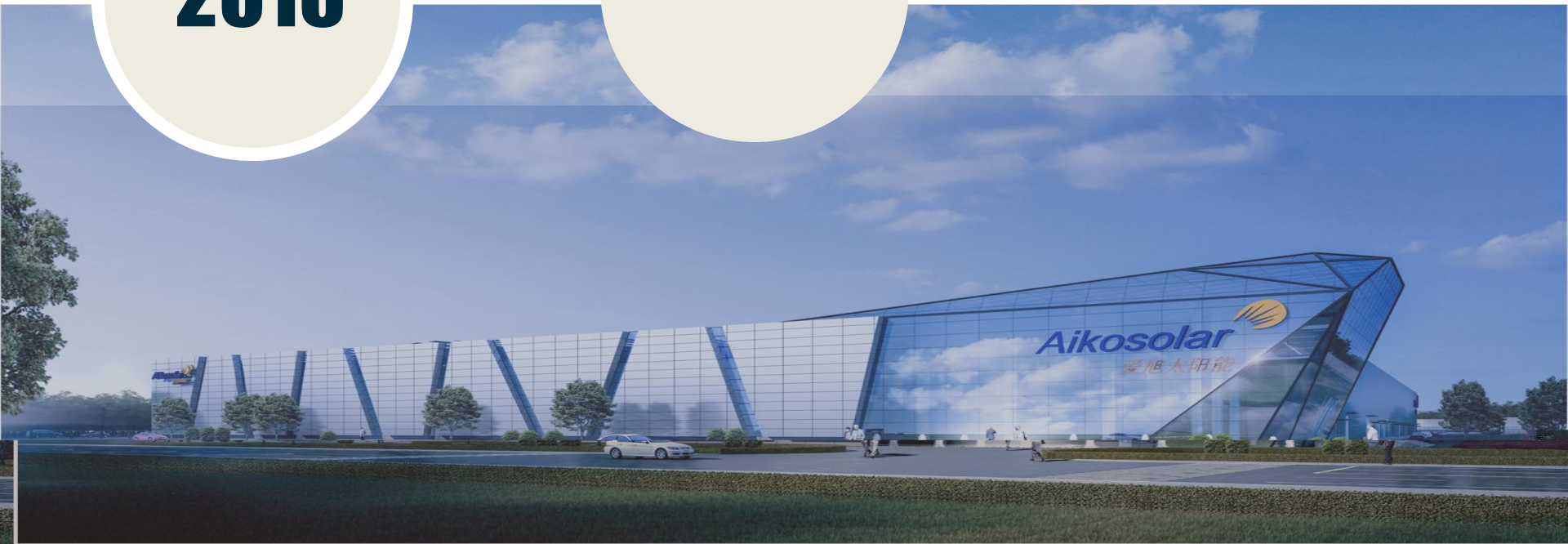


—

2009



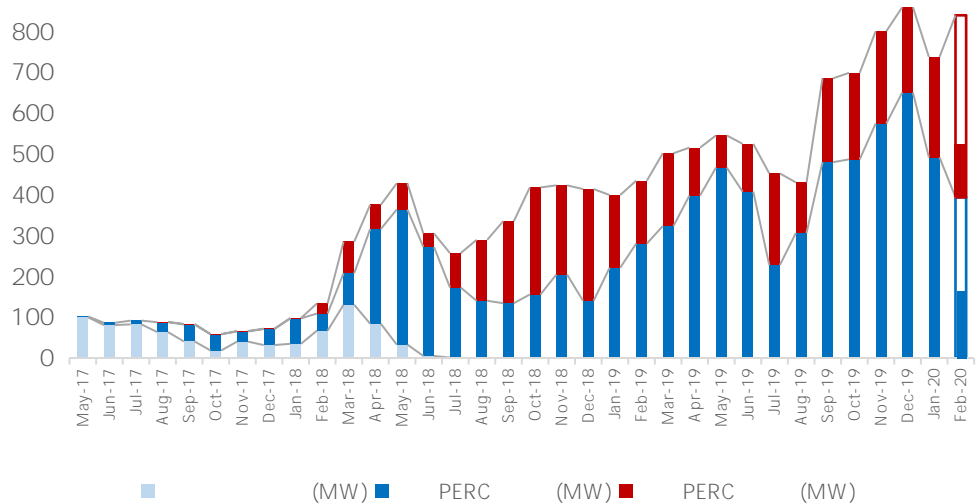
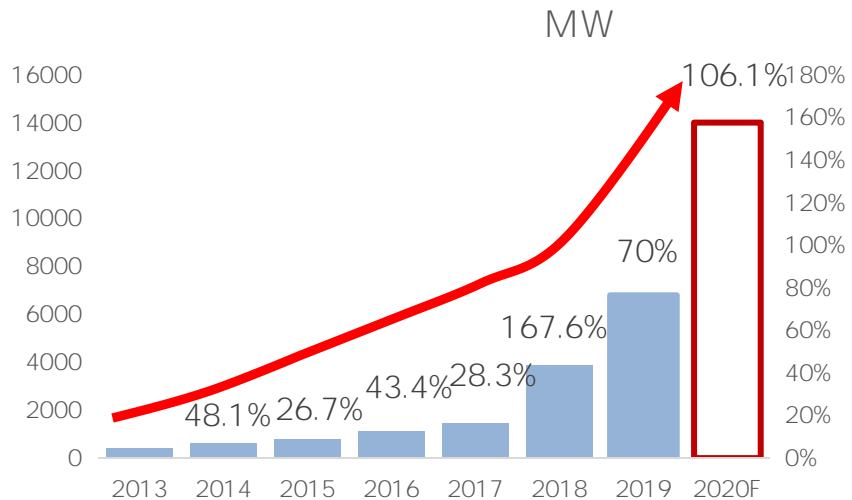
2016



2019

2020

爱旭成功登陆资本市场，成为“A股上市公司”



2009

2019

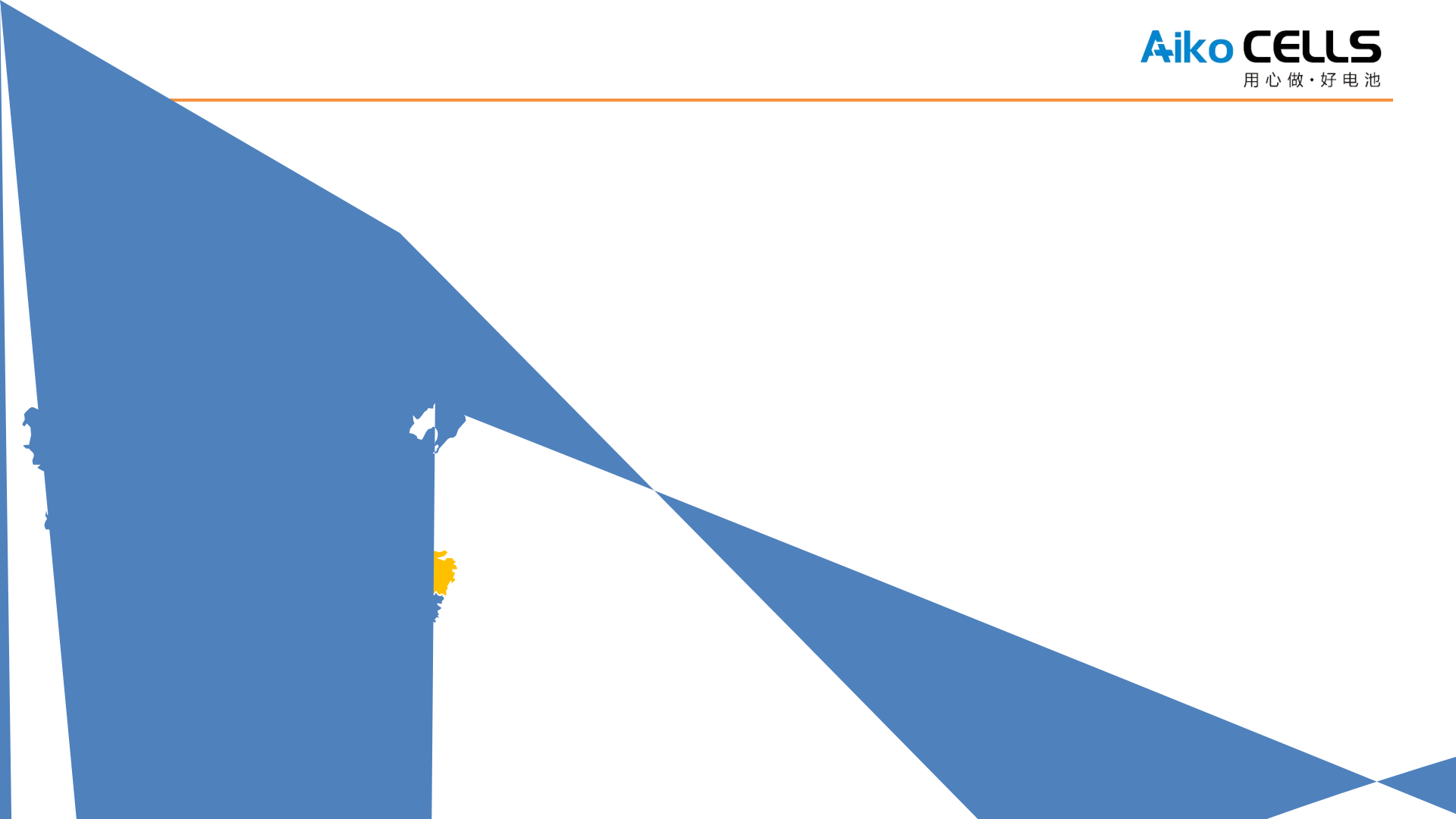
70%

6.79GW

2016

PERC

& &





“

”

— —





1-3F

4F

5F

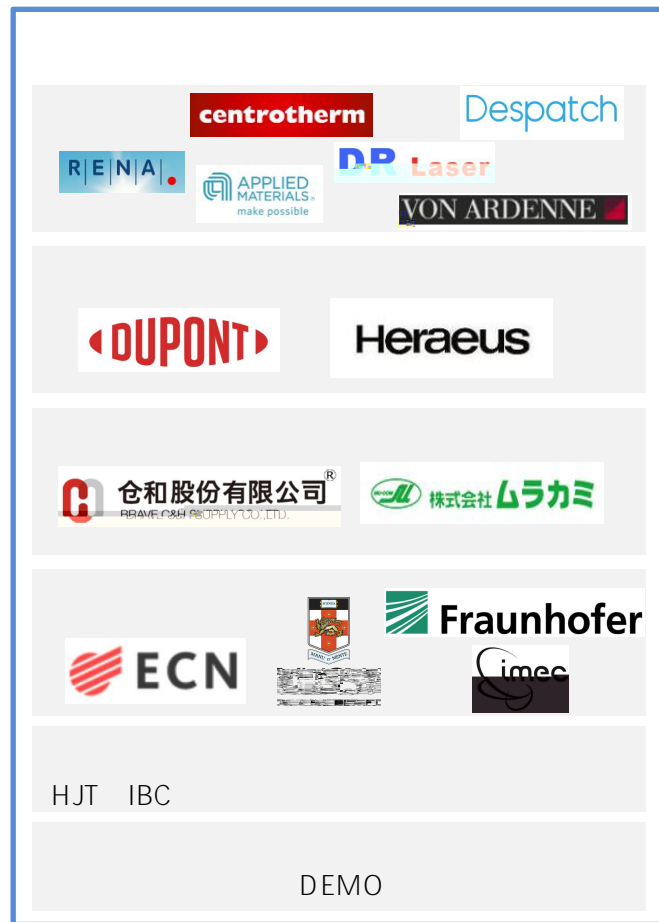
+

6F

7F

8F

Roof





1.

2.

3.

4.

5.

6.

7.

HR

3

6

+

+

+

5500

4

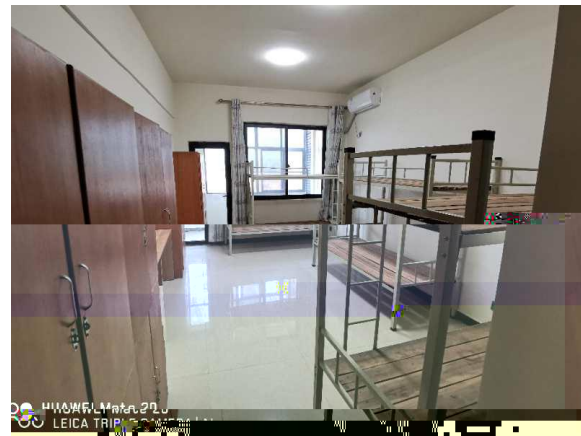
20 /

1. 10-12W / 2
 - 2.
 - 3.
- 36 800 / 30W
- 1.
 - 2.
 - 3.



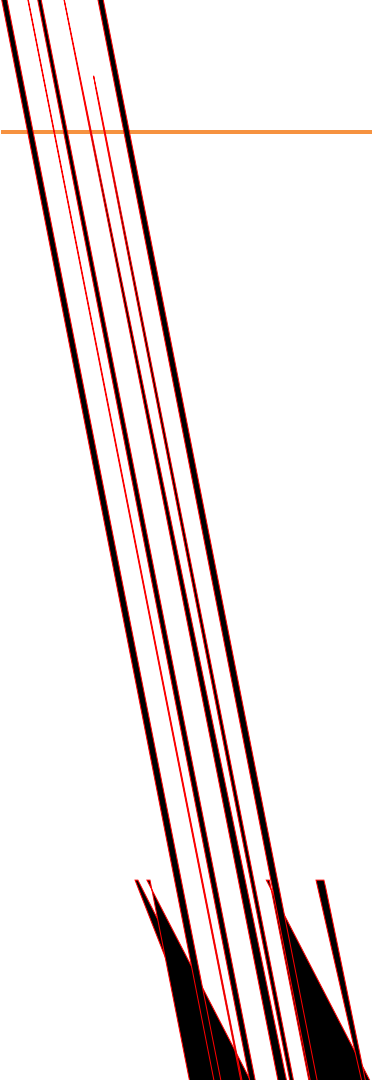














吴老师： 13

友情提醒